

Tovek Tools 4.30 Manual Update

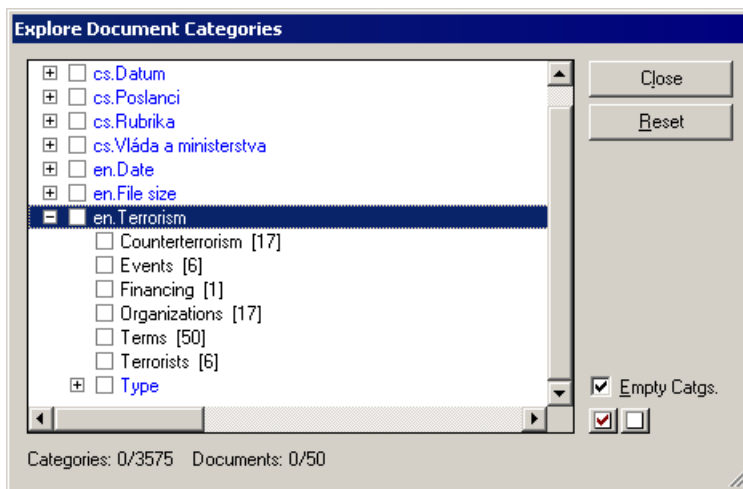
Tovek Agent

Categorisation

If there are categories created in collections on the Tovek Server, the documents in the result list can be restricted according to selected categories.

To obtain categories with the next searches you must turn on the **Get Categories** command from the **Query** menu.

After running the search and obtaining the result list you can open a window with the categories using the **Categories Explorer** from the **Query** command:

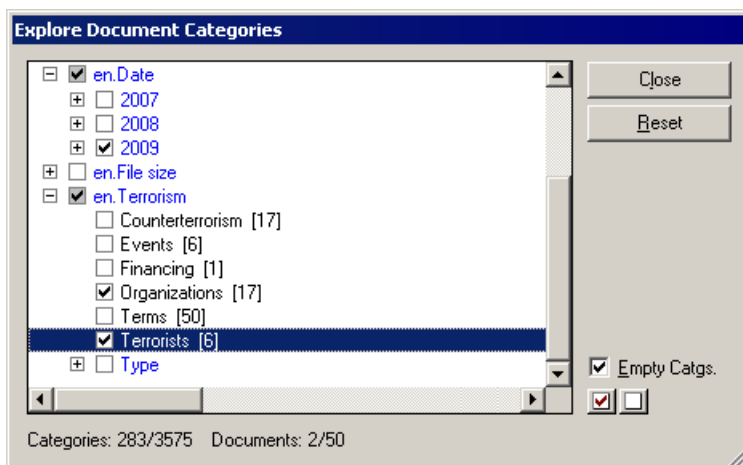


The categories are organized into a hierarchical structure.

If documents in the result list correspond to a query of one of the categories, there will be a number after the category telling you how many documents correspond to this category.

If you check the category, only the documents corresponding to this category will be listed in the result list. If you check several categories from one group, documents corresponding to at least one of these categories will be listed (OR condition). If you check categories in several groups on the main level (e.g. *en.Date* and *en.Terrorism* in the example above), the documents corresponding to at least one category from each main level group will be listed (AND condition).

If you check for example in the *en.Date* category group the *2009* subcategory (it contains the categories for each month of 2009 year) and in the *en.Terrorism* category group you check the *Organizations* and *Terrorists* categories, the documents corresponding to the *2009* category along with the *Organizations* or *Terrorists* categories will be listed in the result list:



In the bottom left part of the Explore Document Categories window there is information about the number of checked categories, total number of categories and number of documents corresponding to checked categories and number of documents in the result list which were assigned to at least one category.

If the **Empty Catgs** field is not checked, only the categories and category groups with some corresponding documents are offered (i.e. these categories are not empty).

The categories can be chosen individually by checking them, or you can use buttons on the window's right side. The checking can be performed by mouse click or by using the keyboard space button. You can select the whole branch at once. To unfold the branch use the [+] key, to fold it use the [-] key. You can also click the plus or minus signs in front of the branch. Double-click on a name will fold or unfold the group.

If only some categories of a branch are checked, the field has a gray background.



The **Select All** button selects all categories.



The **Select None** button releases checking to all categories.

After clicking the **Reset** button, all documents regardless of category checking will be listed in the result list.

Clicking the **Close** button closes the Explore Document Categories window.

When running queries with category obtaining, you have to assume a longer response.